



Tavolo tondo realizzato con top in massello e possibilità di aggiunta di un vassoio in legno oppure marmo in appoggio, dotato di sistema girevole Lazy Susan. Caratterizzato da un basamento a raggiera in ferro.

COD.	MISURE	BASE	A1	A2	A4
KOHI-TABLE1	Ø 130 x H.72	B2	■	■	■
		B3	■	■	■
KOHI-TABLE2	Ø 150 x H.72	B2	■	■	■
		B3	■	■	■
KOHI-TABLE3	Ø 160 x H.72	B2	■	■	■
		B3	■	■	■
KOHI-TABLE4	Ø 180 x H.72	B2	■	■	■
		B3	■	■	■
KOHI-TABLE5	Ø 200 x H.72	B2	■	■	■
		B3	■	■	■

FINITURE DISPONIBILI:

A1: noce senza nodi, noce con nodi

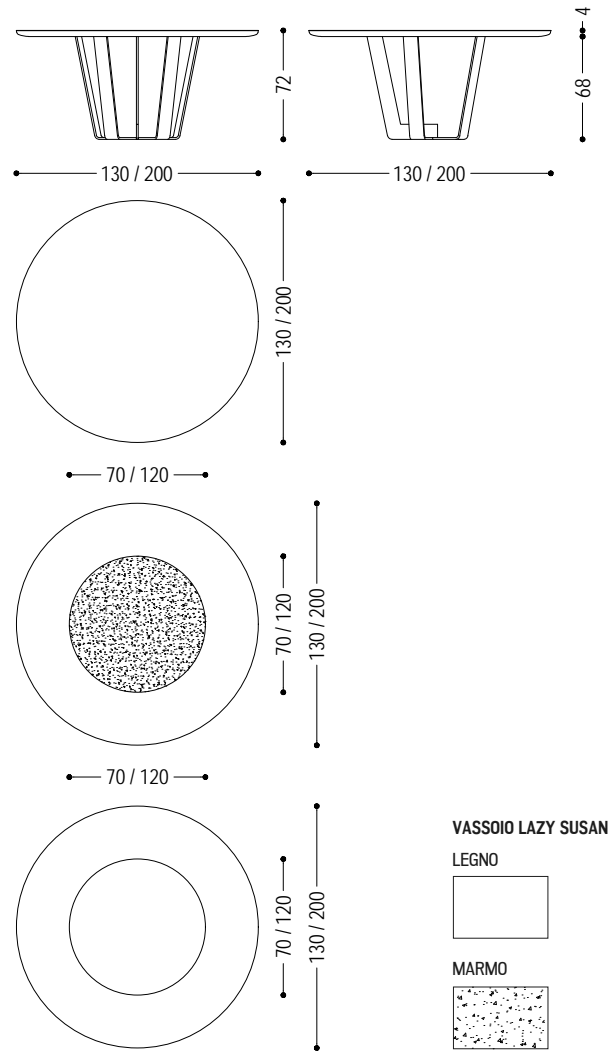
A2: rovere senza nodi, rovere con nodi, ciliegio

A4: rovere senza nodi pigmentato: bianco latte, total black
 rovere con nodi pigmentato: bianco latte, total black

B2: ferro laccato: iron dust, RAL (solo colori selezionati)

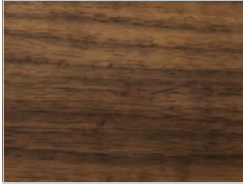
B3: ferro laccato effetto spazzolato opaco: bronzo antico, acciaio, titanio

KOHI TABLE



LEGNO

A1

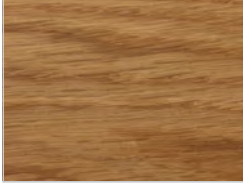


noce senza nodi



noce con nodi

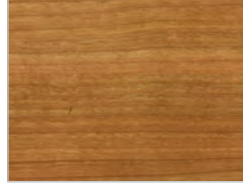
A2



rovere senza nodi



rovere con nodi

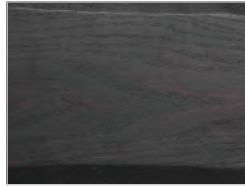


ciliegio

A4



rovere senza nodi pigmentato:
bianco latte



rovere senza nodi pigmentato:
total black



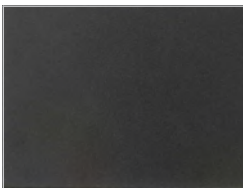
rovere con nodi pigmentato:
bianco latte



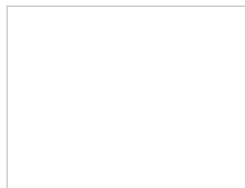
rovere con nodi pigmentato:
total black

FERRO

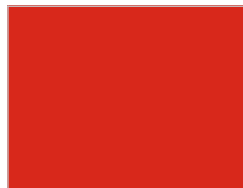
B2



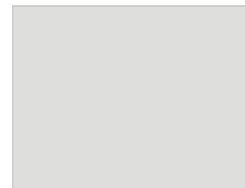
ferro laccato:
iron dust



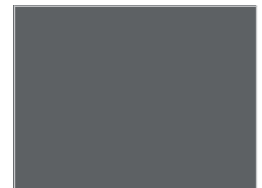
ferro laccato:
RAL - 1013_BIANCO PERLA



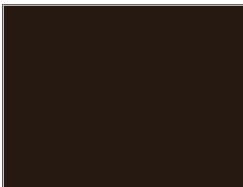
ferro laccato:
RAL - 3020_ROSSO TRAFFICO



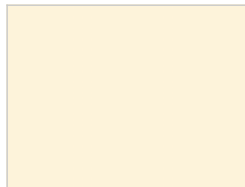
ferro laccato:
RAL - 7035_GRIGIO LUCE



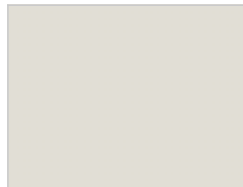
ferro laccato:
RAL - 7037_GRIGIO POLVERE



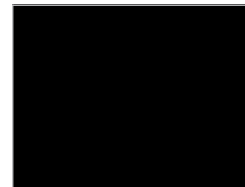
ferro laccato:
RAL - 8019_MARRONE GRIGIASTRO



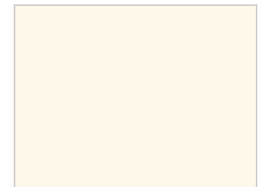
ferro laccato:
RAL - 9001_BIANCO CREMA



ferro laccato:
RAL - 9002_BIANCO GRIGIASTRO



ferro laccato:
RAL - 9005_NERO INTENSO



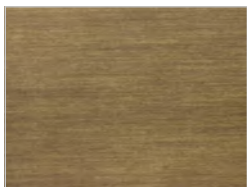
ferro laccato:
RAL - 9010_BIANCO PURO



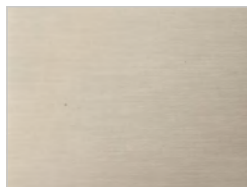
ferro laccato:
RAL - 9016_BIANCO TRAFFICO

KOHI TABLE | FINITURE DISPONIBILI

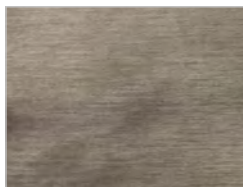
B3



ferro laccato effetto spazzolato opaco:
bronzo antico



ferro laccato effetto spazzolato opaco:
acciaio



ferro laccato effetto spazzolato opaco:
titanio

ALTRI MATERIALI

F1

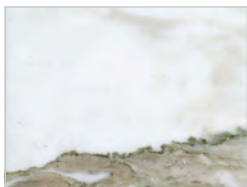


marmo verde alpi



marmo emperador dark

F2



marmo calacatta