

Bitta

2 Seater sofa

bela rope

teak

by Rodolfo Dordoni

kettal

2 Seater sofa bela rope teak

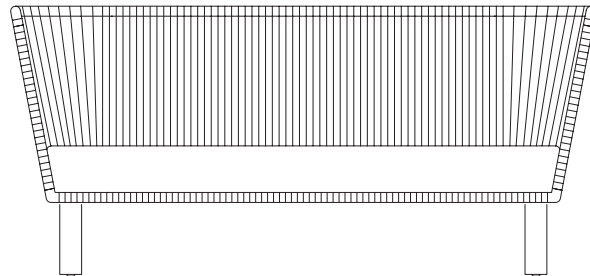
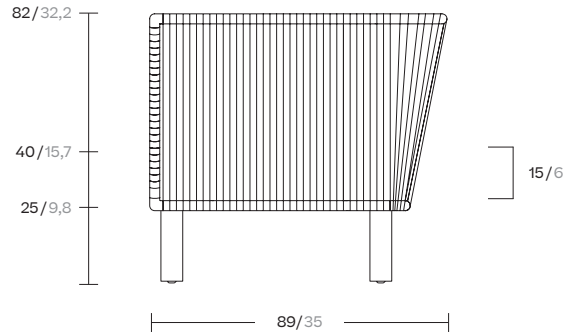
Designer
Rodolfo Dordoni

Collection
Bitta

Reference
KS7001200

1/5

cm/inch



cm/inch | 175/68,8

Kettal Bitta is characterised by a combination of aluminium frames, seats of braided polyester and comfortable cushions, teak and stone for the table tops. My aim was to create dense braiding that would still let the air through, reminiscent of the braiding of the ropes used to moor boats (hence the name Bitta, which means 'mooring' in Italian), which makes the pieces look lightweight but, at the same time, they look just like cosy nests in natural colours to sit back and relax in.



kettal

2 Seater sofa bela rope teak

Designer
Rodolfo Dordoni

Collection
Bitta

Reference
KS7001200

2/5

Materials

Rope
Antioxy, Resist U.V, En-581-4, Easy Clean

Fabric
Heavy Load 100.000 Cycles, Heavy Load Resistant 1000 Decitex, Kettalize-It, Resist U.v. En-581-4, Easy Clean, Abrasion, Resistance 30.000 Cycles, Quickdry

Aluminium
Antioxy, Heavy Load, Resistant En-1421, Anti-Scratch, Easy Clean, Flame Retardant M1, Eco Friendly Ecoembes Recycling Process Foam UNI 9175 (Classe 11M), Anti-Mold, Flame Retardant M1

Teak
Teak A-Grade, Eco Friendly Oeko-Tek

Maintenance

Clean with mild soap using sponge or cloth. Be gentle while cleaning, do not scrub aggressively the fabric. Once cleaned please make sure you remove soap excess.

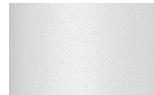
In case of aggressive stains clean with diluted household bleach.

Clean stains promptly. The longer it remains, more difficult will be to remove.

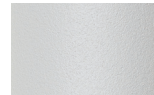
Once cleaned the fabric steam iron the fabric. Just use steam, be carefull NOT placing the iron directly in the fabric it will get damage.

Legs Colour Options

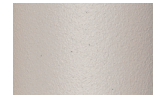
Terrain Paints (for Aluminium)



Chalk
721



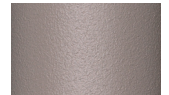
Bone
678



Tuff
103



Mist
773



Flint
734



London Clay
729



Mahogany
100



Carbon
737



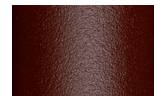
Lilac
104



Feldspar
082



Sepia
088



Terra Rossa
087



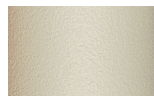
Magma
086



Terracota
085



Sahara
139



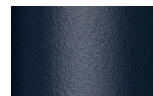
Camomile
106



Aquamarine
107



Cobalt
089



Indigo
094



Jade
091



Onyx
101



Juniper
092



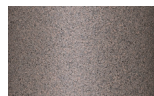
Amazon
102



Bronze
093



Corten
727



Claystone
741



Sand Storm
132



Pumice
131



Galena
105



Manganese
726

Legs Colour Options

Teak



Teak
904

2 Seater sofa bela rope teak

Designer
Rodolfo Dordoni

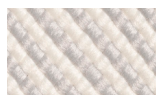
Collection
Bitta

Reference
KS7001200

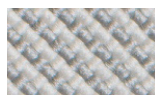
3/5

Frame Colour Options

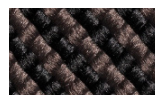
Bela Rope



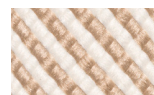
Snow Bird
434



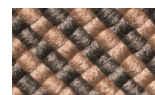
Silver Leaf
421



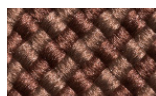
Woodland
441



New Dawn
452



Honeysuckle
453



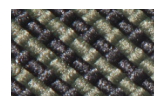
Forest Bell
451



Jasmine
431



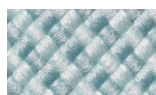
Oberon
432



Ivy
433



Esmerald
425



Blue River
422



Alpina
423



Romantika
424



Wisteria
414



Rosa
413



Campsis
411



Virginia
412

2 Seater sofa bela rope teak

Designer
Rodolfo Dordoni

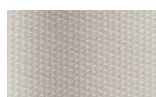
Collection
Bitta

Reference
KS7001200

4/5

Seat & Back Cushion

Terrain Fabrics



White Cliffs
290



Dry Sand
285



Porous Grey
291



Limestone
292



Fog
289



Deer
286



Wet Sand
287



Cobblestone
302



Cyprus Umber
301



Loam
297



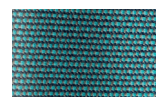
Charcoal
293



Arctic
295



Fjord
248



Cerulean
314



Caribbean
298



Atlantic
311



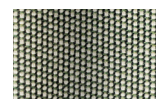
Rainforest
312



Lagoon
249



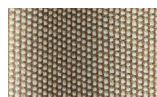
Cedar
288



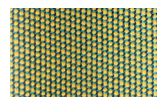
Moss
296



Olive
313



Autumn
315



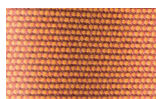
Summer Sky
317



Golden Sand
303



Flamma
304



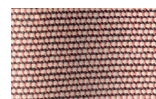
Sunrise
299



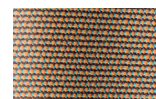
Saffron
305



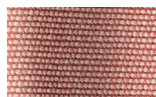
Burnt Sienna
306



Ash Rose
294



Cooper
316



Dusk Pink
307



Flamingo
310



Coral
309



Sandstone
308

2 Seater sofa bela rope teak

Designer
Rodolfo Dordoni

Collection
Bitta

Reference
KS7001200

5/5

Back Cushion

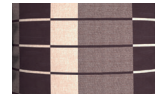
Geometric Fabrics



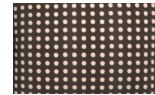
Umbra Brown
192



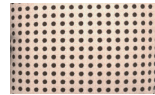
Dash Brown
162



Shade Brown
152



Dots Brown
142



Dots Light Brown
147



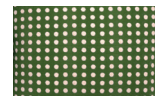
Umbra Green
191



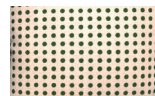
Dash Green
161



Shade Green
151



Dots Green
141



Dots Light Green
146



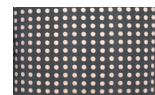
Umbra Grey
193



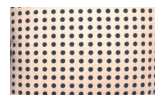
Dash Grey
163



Shade Grey
153



Dots Grey
143



Dots Light Grey
148



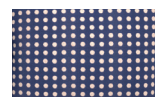
Umbra Blue
190



Dash Blue
160



Shade Blue
150



Dots Blue
140



Dots Light Blue
145



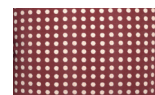
Umbra Red
194



Dash Red
164



Shade Red
154



Dots Red
144



Dots Light Red
149

Bitta

3 Seater sofa

bela rope

teak

by Rodolfo Dordoni

kettal

3 Seater sofa bela rope teak

Designer
Rodolfo Dordoni

Collection
Bitta

Reference
KS7001400

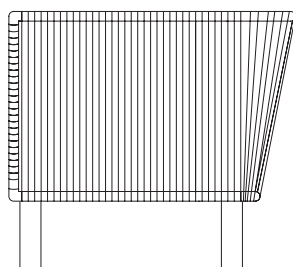
Kettal Bitta is characterised by a combination of aluminium frames, seats of braided polyester and comfortable cushions, teak and stone for the table tops. My aim was to create dense braiding that would still let the air through, reminiscent of the braiding of the ropes used to moor boats (hence the name Bitta, which means 'mooring' in Italian), which makes the pieces look lightweight but, at the same time, they look just like cosy nests in natural colours to sit back and relax in.

cm/inch

82/32,2

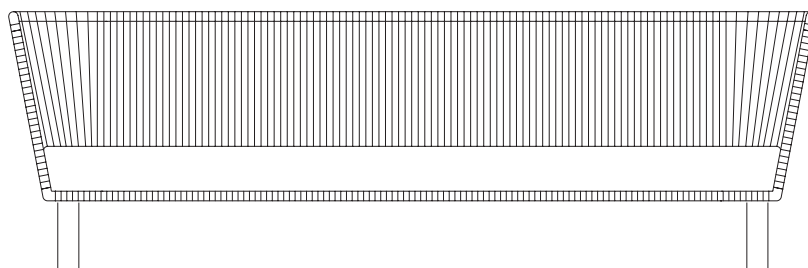
40/15,7

25/9,8



89/35

15/6



cm/inch

250/98,4



kettal

3 Seater sofa bela rope teak

Designer
Rodolfo Dordoni

Collection
Bitta

Reference
KS7001400

2/5

Materials

Rope
Antioxy, Resist U.V, En-581-4, Easy Clean

Fabric
Heavy Load 100.000 Cycles, Heavy Load Resistant 1000 Decitex, Kettalize-It, Resist U.v. En-581-4, Easy Clean, Abrasion, Resistance 30.000 Cycles, Quickdry

Aluminium
Antioxy, Heavy Load, Resistant En-1421, Anti-Scratch, Easy Clean, Flame Retardant M1, Eco Friendly Ecoembes Recycling Process Foam UNI 9175 (Classe 11M), Anti-Mold, Flame Retardant M1

Teak
Teak A-Grade, Eco Friendly Oeko-Tek

Maintenance

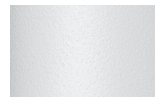
Clean with mild soap using sponge or cloth. Be gentle while cleaning, do not scrub aggressively the fabric. Once cleaned please make sure you remove soap excess.

In case of aggressive stains clean with diluted household bleach.

Clean stains promptly. The longer it remains, more difficult will be to remove.

Once cleaned the fabric steam iron the fabric. Just use steam, be carefull NOT placing the iron directly in the fabric it will get damage.

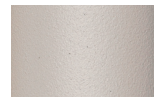
Legs Colour Options



Chalk
721



Bone
678



Tuff
103



Mist
773



Flint
734



London Clay
729



Mahogany
100



Carbon
737



Lilac
104



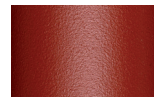
Feldspar
082



Sepia
088



Terra Rossa
087



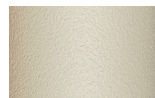
Magma
086



Terracota
085



Sahara
139



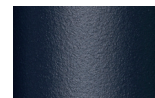
Camomile
106



Aquamarine
107



Cobalt
089



Indigo
094



Jade
091



Onyx
101



Juniper
092



Amazon
102



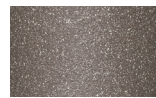
Bronze
093



Corten
727



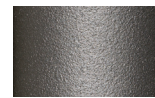
Claystone
741



Sand Storm
132



Pumice
131



Galena
105



Manganese
726

Legs Colour Options



Teak
904

Teak

3 Seater sofa bela rope teak

Designer
Rodolfo Dordoni

Collection
Bitta

Reference
KS7001400

3/5

Frame Colour Options

Bela Rope



Snow Bird
434



Silver Leaf
421



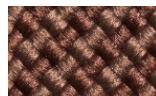
Woodland
441



New Dawn
452



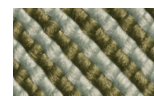
Honeysuckle
453



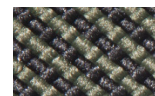
Forest Bell
451



Jasmine
431



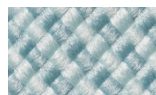
Oberon
432



Ivy
433



Esmerald
425



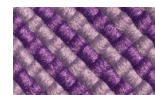
Blue River
422



Alpina
423



Romantika
424



Wisteria
414



Rosa
413



Campsis
411



Virginia
412

3 Seater sofa bela rope teak

Designer
Rodolfo Dordoni

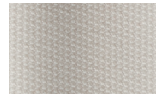
Collection
Bitta

Reference
KS7001400

4/5

Seat & Back Cushion

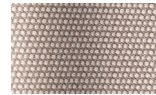
Terrain Fabrics



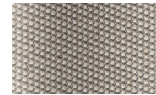
White Cliffs
290



Dry Sand
285



Porous Grey
291



Limestone
292



Fog
289



Deer
286



Wet Sand
287



Cobblestone
302



Cyprus Umber
301



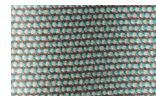
Loam
297



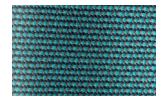
Charcoal
293



Arctic
295



Fjord
248



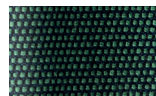
Cerulean
314



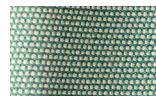
Caribbean
298



Atlantic
311



Rainforest
312



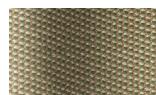
Lagoon
249



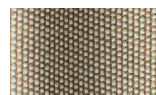
Cedar
288



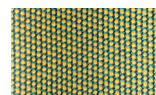
Moss
296



Olive
313



Autumn
315



Summer Sky
317



Golden Sand
303



Flamma
304



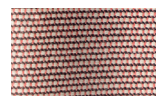
Sunrise
299



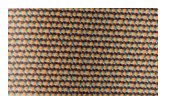
Saffron
305



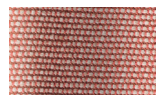
Burnt Sienna
306



Ash Rose
294



Cooper
316



Dusk Pink
307



Flamingo
310



Coral
309



Sandstone
308

3 Seater sofa bela rope teak

Designer
Rodolfo Dordoni

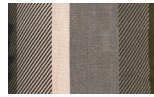
Collection
Bitta

Reference
KS7001400

5/5

Back Cushion

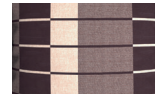
Geometric Fabrics



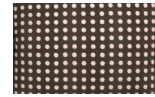
Umbra Brown
192



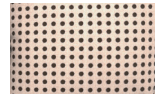
Dash Brown
162



Shade Brown
152



Dots Brown
142



Dots Light Brown
147



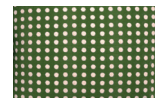
Umbra Green
191



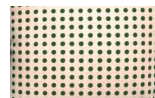
Dash Green
161



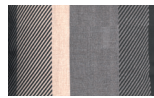
Shade Green
151



Dots Green
141



Dots Light Green
146



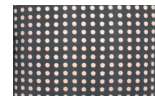
Umbra Grey
193



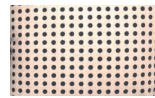
Dash Grey
163



Shade Grey
153



Dots Grey
143



Dots Light Grey
148



Umbra Blue
190



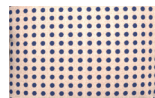
Dash Blue
160



Shade Blue
150



Dots Blue
140



Dots Light Blue
145



Umbra Red
194



Dash Red
164



Shade Red
154



Dots Red
144



Dots Light Red
149

Bitta

Left corner module

bela rope

teak

by Rodolfo Dordoni

kettal

Left corner module bela rope teak

Designer
Rodolfo Dordoni

Collection
Bitta

Reference
KS7001600

1/5

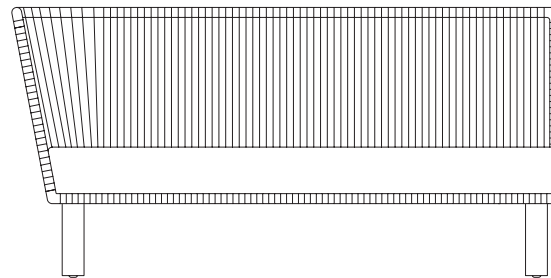
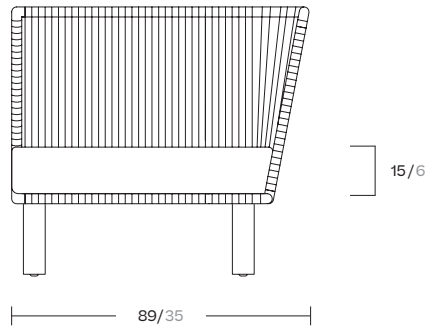
Kettal Bitta is characterised by a combination of aluminium frames, seats of braided polyester and comfortable cushions, teak and stone for the table tops. My aim was to create dense braiding that would still let the air through, reminiscent of the braiding of the ropes used to moor boats (hence the name Bitta, which means 'mooring' in Italian), which makes the pieces look lightweight but, at the same time, they look just like cosy nests in natural colours to sit back and relax in.

cm/inch

82/32,2

40/15,7

25/9,8



cm/inch

164/64,5



kettal

Left corner module bela rope teak

Designer
Rodolfo Dordoni

Collection
Bitta

Reference
KS7001600

2/5

Materials

Rope
Antioxy, Resist U.V, En-581-4, Easy Clean

Fabric
Heavy Load 100.000 Cycles,
Heavy Load Resistant
1000 Decitex, Kettalize-It,
Resist U.v. En-581-4, Easy Clean,
Abrasion, Resistance 30.000
Cycles, Quickdry

Aluminium
Antioxy, Heavy Load, Resistant
En-1421, Anti-Scratch, Easy
Clean, Flame Retardant M1, Eco
Friendly Ecoembes Recycling
Process Foam UNI 9175 (Classe
11M), Anti-Mold, Flame Retardant
M1

Teak
Teak A-Grade, Eco Friendly
Oeko-Tek

Maintenance

Clean with mild soap using
sponge or cloth. Be gentle
while cleaning, do not scrub
aggressively the fabric. Once
cleaned please make sure you
remove soap excess.

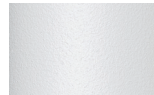
In case of aggressive stains
clean with diluted household
bleach.

Clean stains promptly. The
longer it remains, more difficult
will be to remove.

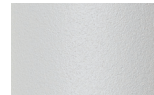
Once cleaned the fabric steam
iron the fabric. Just use steam,
be carefull NOT placing the
iron directly in the fabric it will
get damage.

Legs Colour Options

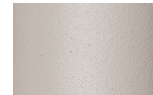
Terrain Paints (for Aluminium)



Chalk
721



Bone
678



Tuff
103



Mist
773



Flint
734



London Clay
729



Mahogany
100



Carbon
737



Lilac
104



Feldspar
082



Sepia
088



Terra Rossa
087



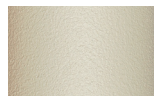
Magma
086



Terracota
085



Sahara
139



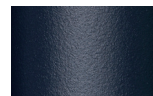
Camomile
106



Aquamarine
107



Cobalt
089



Indigo
094



Jade
091



Onyx
101



Juniper
092



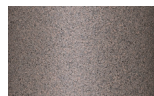
Amazon
102



Bronze
093



Corten
727



Claystone
741



Sand Storm
132



Pumice
131



Galena
105



Manganese
726

Legs Colour Options

Teak



Teak
904

Left corner module bela rope teak

Designer
Rodolfo Dordoni

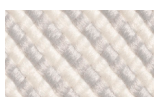
Collection
Bitta

Reference
KS7001600

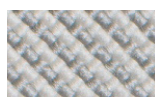
3/5

Frame Colour Options

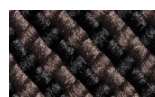
Bela Rope



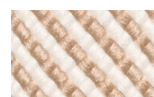
Snow Bird
434



Silver Leaf
421



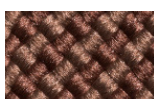
Woodland
441



New Dawn
452



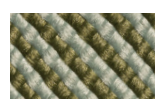
Honeysuckle
453



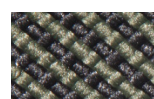
Forest Bell
451



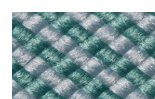
Jasmine
431



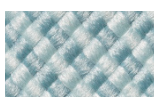
Oberon
432



Ivy
433



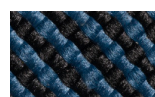
Esmerald
425



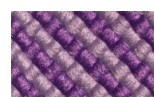
Blue River
422



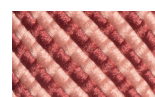
Alpina
423



Romantika
424



Wisteria
414



Rosa
413



Campsis
411



Virginia
412

Left corner module bela rope teak

Designer
Rodolfo Dordoni

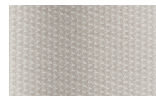
Collection
Bitta

Reference
KS7001600

4/5

Seat & Back Cushion

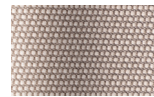
Terrain Fabrics



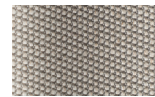
White Cliffs
290



Dry Sand
285



Porous Grey
291



Limestone
292



Fog
289



Deer
286



Wet Sand
287



Cobblestone
302



Cyprus Umber
301



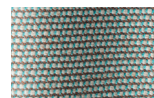
Loam
297



Charcoal
293



Arctic
295



Fjord
248



Cerulean
314



Caribbean
298



Atlantic
311



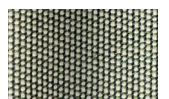
Rainforest
312



Lagoon
249



Cedar
288



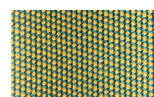
Moss
296



Olive
313



Autumn
315



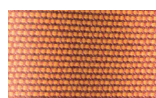
Summer Sky
317



Golden Sand
303



Flamma
304



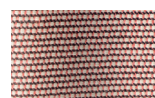
Sunrise
299



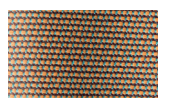
Saffron
305



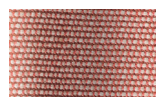
Burnt Sienna
306



Ash Rose
294



Cooper
316



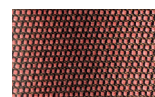
Dusk Pink
307



Flamingo
310



Coral
309



Sandstone
308

Left corner module bela rope teak

Designer
Rodolfo Dordoni

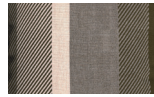
Collection
Bitta

Reference
KS7001600

5/5

Back Cushion

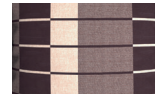
Geometric Fabrics



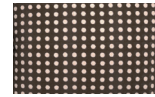
Umbra Brown
192



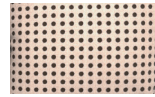
Dash Brown
162



Shade Brown
152



Dots Brown
142



Dots Light Brown
147



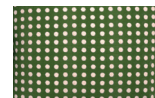
Umbra Green
191



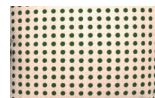
Dash Green
161



Shade Green
151



Dots Green
141



Dots Light Green
146



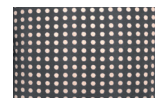
Umbra Grey
193



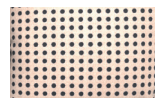
Dash Grey
163



Shade Grey
153



Dots Grey
143



Dots Light Grey
148



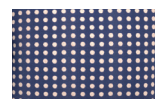
Umbra Blue
190



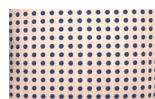
Dash Blue
160



Shade Blue
150



Dots Blue
140



Dots Light Blue
145



Umbra Red
194



Dash Red
164



Shade Red
154



Dots Red
144



Dots Light Red
149

Bitta

Right corner module

bela rope

teak

by Rodolfo Dordoni

kettal

Right corner module bela rope teak

Designer
Rodolfo Dordoni

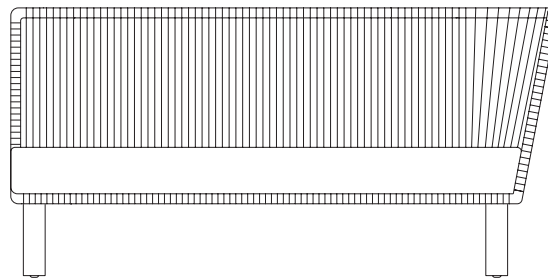
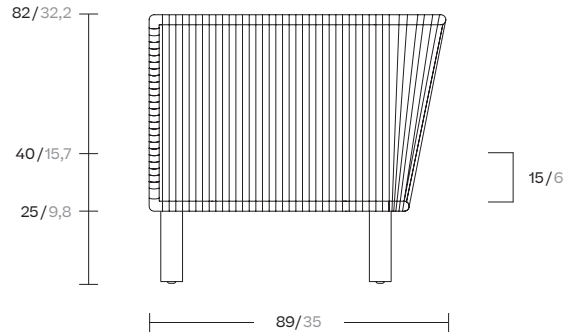
Collection
Bitta

Reference
KS7001800

1/5

Kettal Bitta is characterised by a combination of aluminium frames, seats of braided polyester and comfortable cushions, teak and stone for the table tops. My aim was to create dense braiding that would still let the air through, reminiscent of the braiding of the ropes used to moor boats (hence the name Bitta, which means 'mooring' in Italian), which makes the pieces look lightweight but, at the same time, they look just like cosy nests in natural colours to sit back and relax in.

cm/inch



cm/inch | 164/64,5



kettal

Right corner module bela rope teak

Designer
Rodolfo Dordoni

Collection
Bitta

Reference
KS7001800

2/5

Materials

Rope
Antioxy, Resist U.V, En-581-4, Easy Clean

Fabric
Heavy Load 100.000 Cycles,
Heavy Load Resistant
1000 Decitex, Kettalize-It,
Resist U.v. En-581-4, Easy Clean,
Abrasion, Resistance 30.000
Cycles, Quickdry

Aluminium
Antioxy, Heavy Load, Resistant
En-1421, Anti-Scratch, Easy
Clean, Flame Retardant M1, Eco
Friendly Ecoembes Recycling
Process Foam UNI 9175 (Classe
11M), Anti-Mold, Flame Retardant
M1

Teak
Teak A-Grade, Eco Friendly
Oeko-Tek

Maintenance

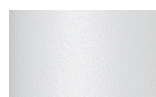
Clean with mild soap using
sponge or cloth. Be gentle
while cleaning, do not scrub
aggressively the fabric. Once
cleaned please make sure you
remove soap excess.

In case of aggressive stains
clean with diluted household
bleach.

Clean stains promptly. The
longer it remains, more difficult
will be to remove.

Once cleaned the fabric steam
iron the fabric. Just use steam,
be carefull NOT placing the
iron directly in the fabric it will
get damage.

Legs Colour Options



Chalk
721



Bone
678



Tuff
103



Mist
773



Flint
734



London Clay
729



Mahogany
100



Carbon
737



Lilac
104



Feldspar
082



Sepia
088



Terra Rossa
087



Magma
086



Terracota
085



Sahara
139



Camomile
106



Aquamarine
107



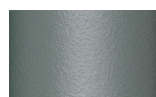
Cobalt
089



Indigo
094



Jade
091



Onyx
101



Juniper
092



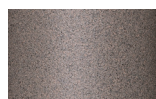
Amazon
102



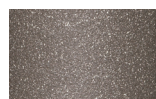
Bronze
093



Corten
727



Claystone
741



Sand Storm
132



Pumice
131



Galena
105



Manganese
726

Legs Colour Options



Teak
904

Teak

Right corner module bela rope teak

Designer
Rodolfo Dordoni

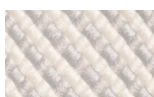
Collection
Bitta

Reference
KS7001800

3/5

Frame Colour Options

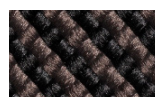
Bela Rope



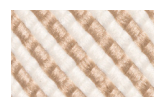
Snow Bird
434



Silver Leaf
421



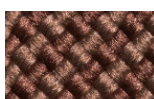
Woodland
441



New Dawn
452



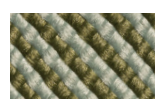
Honeysuckle
453



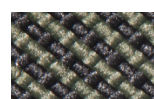
Forest Bell
451



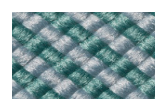
Jasmine
431



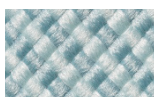
Oberon
432



Ivy
433



Esmerald
425



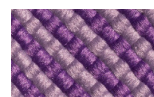
Blue River
422



Alpina
423



Romantika
424



Wisteria
414



Rosa
413



Campsis
411



Virginia
412

Right corner module bela rope teak

Designer
Rodolfo Dordoni

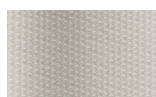
Collection
Bitta

Reference
KS7001800

4/5

Seat & Back Cushion

Terrain Fabrics



White Cliffs
290



Dry Sand
285



Porous Grey
291



Limestone
292



Fog
289



Deer
286



Wet Sand
287



Cobblestone
302



Cyprus Umber
301



Loam
297



Charcoal
293



Arctic
295



Fjord
248



Cerulean
314



Caribbean
298



Atlantic
311



Rainforest
312



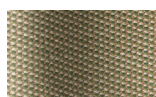
Lagoon
249



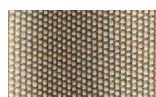
Cedar
288



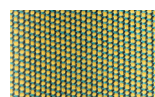
Moss
296



Olive
313



Autumn
315



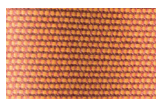
Summer Sky
317



Golden Sand
303



Flamma
304



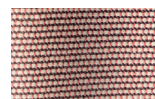
Sunrise
299



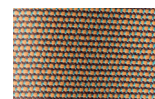
Saffron
305



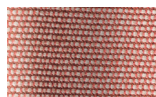
Burnt Sienna
306



Ash Rose
294



Cooper
316



Dusk Pink
307



Flamingo
310



Coral
309



Sandstone
308

Right corner module bela rope teak

Designer
Rodolfo Dordoni

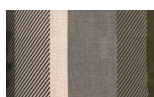
Collection
Bitta

Reference
KS7001800

5/5

Back Cushion

Geometric Fabrics



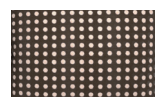
Umbra Brown
192



Dash Brown
162



Shade Brown
152



Dots Brown
142



Dots Light Brown
147



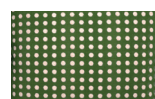
Umbra Green
191



Dash Green
161



Shade Green
151



Dots Green
141



Dots Light Green
146



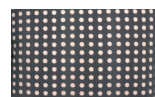
Umbra Grey
193



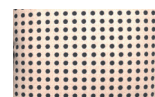
Dash Grey
163



Shade Grey
153



Dots Grey
143



Dots Light Grey
148



Umbra Blue
190



Dash Blue
160



Shade Blue
150



Dots Blue
140



Dots Light Blue
145



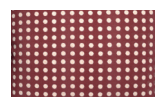
Umbra Red
194



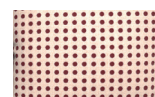
Dash Red
164



Shade Red
154



Dots Red
144



Dots Light Red
149

Bitta

Central module

bela rope

teak

by Rodolfo Dordoni

kettal

Central module bela rope teak

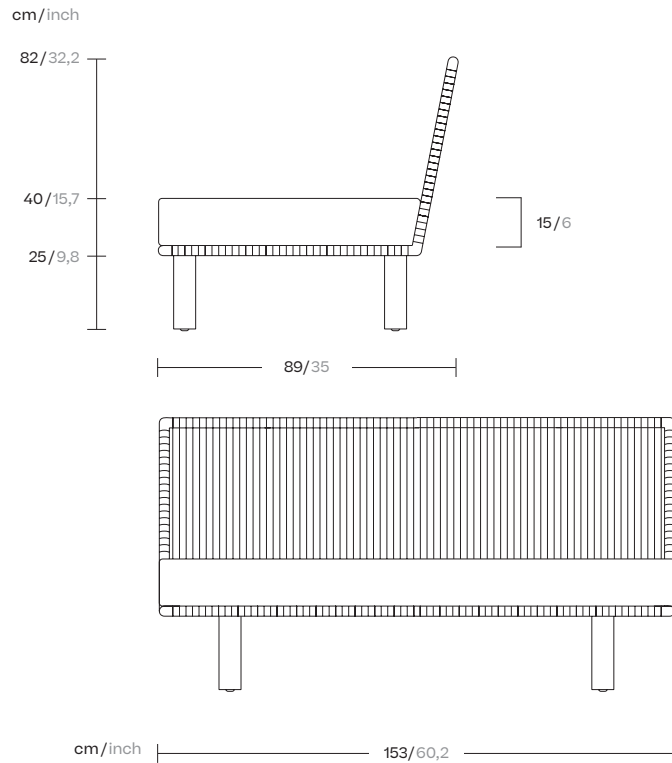
Designer
Rodolfo Dordoni

Collection
Bitta

Reference
KS7002000

1/5

Kettal Bitta is characterised by a combination of aluminium frames, seats of braided polyester and comfortable cushions, teak and stone for the table tops. My aim was to create dense braiding that would still let the air through, reminiscent of the braiding of the ropes used to moor boats (hence the name Bitta, which means 'mooring' in Italian), which makes the pieces look lightweight but, at the same time, they look just like cosy nests in natural colours to sit back and relax in.



kettal

Central module bela rope teak

Designer
Rodolfo Dordoni

Collection
Bitta

Reference
KS7002000

2/5

Materials

Rope
Antioxy, Resist U.V, En-581-4, Easy Clean

Fabric
Heavy Load 100.000 Cycles, Heavy Load Resistant 1000 Decitex, Kettalize-It, Resist U.v. En-581-4, Easy Clean, Abrasion, Resistance 30.000 Cycles, Quickdry

Aluminium
Antioxy, Heavy Load, Resistant En-1421, Anti-Scratch, Easy Clean, Flame Retardant M1, Eco Friendly Ecoembes Recycling Process Foam UNI 9175 (Classe 11M), Anti-Mold, Flame Retardant M1

Teak
Teak A-Grade, Eco Friendly Oeko-Tek

Maintenance

Clean with mild soap using sponge or cloth. Be gentle while cleaning, do not scrub aggressively the fabric. Once cleaned please make sure you remove soap excess.

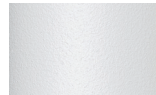
In case of aggressive stains clean with diluted household bleach.

Clean stains promptly. The longer it remains, more difficult will be to remove.

Once cleaned the fabric steam iron the fabric. Just use steam, be carefull NOT placing the iron directly in the fabric it will get damage.

Legs Colour Options

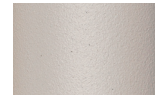
Terrain Paints (for Aluminium)



Chalk
721



Bone
678



Tuff
103



Mist
773



Flint
734



London Clay
729



Mahogany
100



Carbon
737



Lilac
104



Feldspar
082



Sepia
088



Terra Rossa
087



Magma
086



Terracota
085



Sahara
139



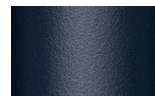
Camomile
106



Aquamarine
107



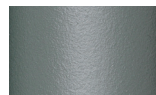
Cobalt
089



Indigo
094



Jade
091



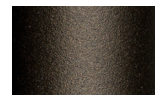
Onyx
101



Juniper
092



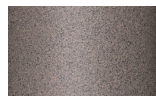
Amazon
102



Bronze
093



Corten
727



Claystone
741



Sand Storm
132



Pumice
131



Galena
105



Manganese
726

Legs Colour Options

Teak



Teak
904

Central module bela rope teak

Designer
Rodolfo Dordoni

Collection
Bitta

Reference
KS7002000

3/5

Frame Colour Options

Bela Rope



Snow Bird
434



Silver Leaf
421



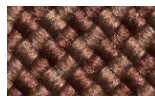
Woodland
441



New Dawn
452



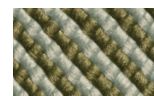
Honeysuckle
453



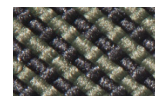
Forest Bell
451



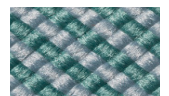
Jasmine
431



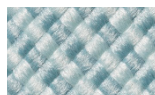
Oberon
432



Ivy
433



Esmerald
425



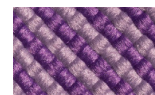
Blue River
422



Alpina
423



Romantika
424



Wisteria
414



Rosa
413



Campsis
411



Virginia
412

Central module bela rope teak

Designer
Rodolfo Dordoni

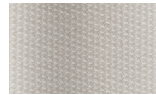
Collection
Bitta

Reference
KS7002000

4/5

Seat & Back Cushion

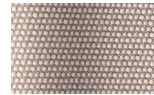
Terrain Fabrics



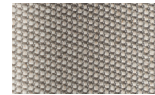
White Cliffs
290



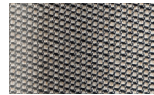
Dry Sand
285



Porous Grey
291



Limestone
292



Fog
289



Deer
286



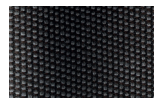
Wet Sand
287



Cobblestone
302



Cyprus Umber
301



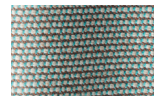
Loam
297



Charcoal
293



Arctic
295



Fjord
248



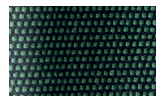
Cerulean
314



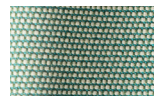
Caribbean
298



Atlantic
311



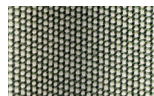
Rainforest
312



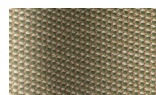
Lagoon
249



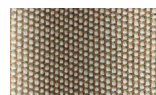
Cedar
288



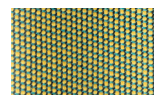
Moss
296



Olive
313



Autumn
315



Summer Sky
317



Golden Sand
303



Flamma
304



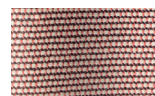
Sunrise
299



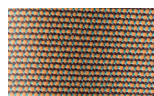
Saffron
305



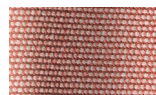
Burnt Sienna
306



Ash Rose
294



Cooper
316



Dusk Pink
307



Flamingo
310



Coral
309



Sandstone
308

Central module bela rope teak

Designer
Rodolfo Dordoni

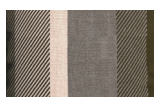
Collection
Bitta

Reference
KS7002000

5/5

Back Cushion

Geometric Fabrics



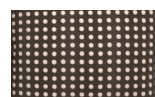
Umbra Brown
192



Dash Brown
162



Shade Brown
152



Dots Brown
142



Dots Light Brown
147



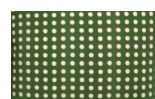
Umbra Green
191



Dash Green
161



Shade Green
151



Dots Green
141



Dots Light Green
146



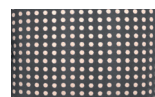
Umbra Grey
193



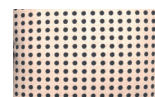
Dash Grey
163



Shade Grey
153



Dots Grey
143



Dots Light Grey
148



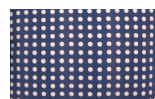
Umbra Blue
190



Dash Blue
160



Shade Blue
150



Dots Blue
140



Dots Light Blue
145



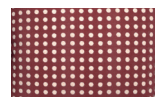
Umbra Red
194



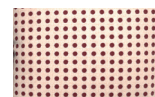
Dash Red
164



Shade Red
154



Dots Red
144



Dots Light Red
149