

Riba
Dining table
by Kettal Studio

kettal

Dining table

Designer
Kettal Studio

Collection
Triconfort Riba

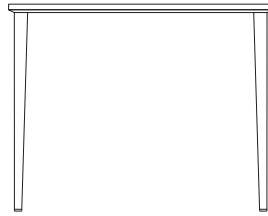
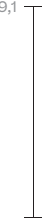
Reference
KS4001200

1/2

This collection mixes ancestral techniques such as the braiding of natural fibres with aluminium, a material that had its heyday in the fifties. Now, the metal frame replaces traditional wood, while natural fibre has been replaced with a synthetic material in order to provide greater weather resistance.

cm/inch

74/29,1



cm/inch

94/37



160/62,9



kettal

Dining table

Designer
Kettal Studio

Collection
Triconfort Riba

Reference
KS4001200

2/2

Materials

Aluminium

Antioxy, Heavy Load, Resistant En-1421, Kettalize-It, Anti-Scratch, Easy Clean, Flame Retardant M1, Eco Friendly
Ecoembes Recy-cling Process

Marble

Light, Strong, Antioxy, Heavy Load, Resistant En-1421, Anti-Scratch, Easy Clean, Flame Retardant M1, Eco Friendly

Teak

Teak A-Grade, Eco Friendly
Oeko-Tek

Maintenance

Clean with mild soap using sponge or cloth. Be gentle while cleaning, do not scrub aggressively the fabric. Once cleaned please make sure you remove soap excess.

In case of aggressive stains clean with diluted household bleach.

Clean stains promptly. The longer it remains, more difficult will be to remove.

Once cleaned the fabric steam iron the fabric. Just use steam, be carefull NOT placing the iron directly in the fabric it will get damage.

Legs/Top Colour Options



Chalk
721



Bone
678



Tuff
103



Mist
773



Flint
734



London Clay
729



Mahogany
100



Carbon
737



Lilac
104



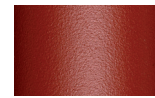
Feldspar
082



Sepia
088



Terra Rossa
087



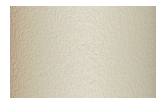
Magma
086



Terracota
085



Sahara
139



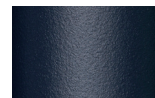
Camomile
106



Aquamarine
107



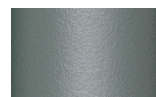
Cobalt
089



Indigo
094



Jade
091



Onyx
101



Juniper
092



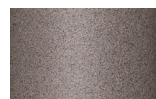
Amazon
102



Bronze
093



Corten
727



Claystone
741



Sand Storm
132



Pumice
131



Galena
105



Manganese
726

Table Top Colour Options



Teak
904



Marble
079

Other